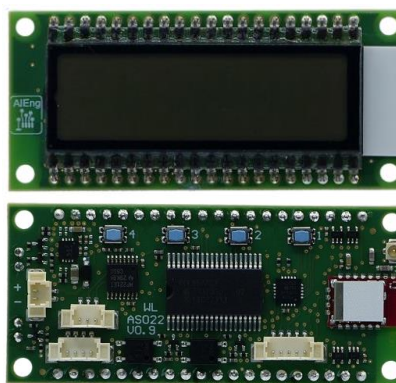


## Single-Channel, LCD Panel Display Load Cell Indicator / Strain Gauge Indicator AS022-DIS-WL

The AS022-DIS-WL is a single-channel wireless panel receiver operating at 2.4 GHz within the license-free band. It features an on-board antenna, with an option for an external antenna for applications involving metal enclosures or to extend the receiving range. The display includes a programmable colour RGB backlight that can indicate under-, nominal-, and maximum load levels. Two output relays can be activated based on programmable threshold limits. Received data can also be relayed to other devices (i.e. PC) via the integrated RS232 serial interface. To ensure a secure wireless link, the device supports encryption and decryption of transmitted and received payloads.

### Features

- Wide-range power supply 5V – 30V
- 4.5 Digit, 8.9mm height LCD display
- Programmable RGB backlight colour
- Programmable Relay output thresholds
- RS232 serial interface output
- Size 64mm x 29mm x 11.5mm height
- 750 meter range (direct line-of-sight)
- 2.4 GHz license-free radio band
- Optional AES 128-bit encryption



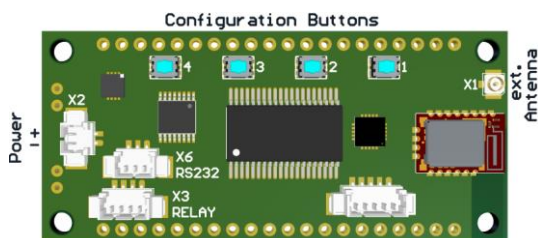
### Applications

- Industrial Weighing
- Load Testing & Monitoring
- Overload Protection Systems

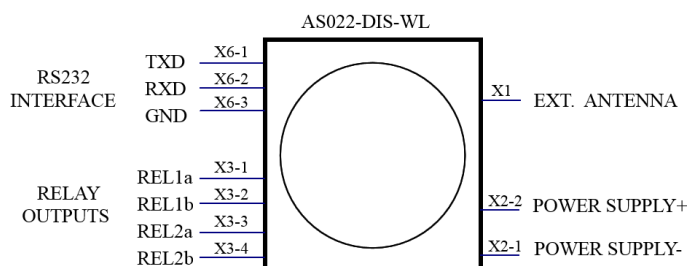
### Ordering

<b>Part number:</b>	<b>AS022-DIS-WL</b>
<b>Customer specific electrical / mechanical changes are possible – please contact us with your individual requirements.</b>	

### Board Connections



### Schematic Diagram



### Specifications

Parameter	Min	Typical	Max	Unit
Supply Voltage	5	12	30	V
RS232 Baudrate		9600		Baud
Relay contact ratings voltage			60	V (AC, DC)
Relay contact ratings current			500	mA
Operating Temperature	-20		+70	°C