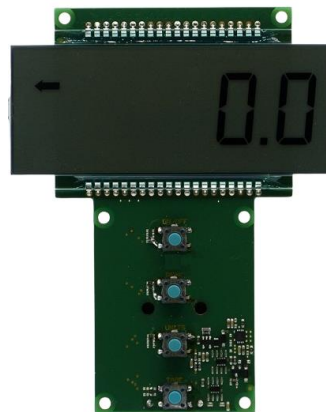


Portable Load Cell Indicator / Strain Gauge Indicator AS021

The AS021 is a portable battery powered large 4.5 digit LCD indicator, providing automatic Zero and Span calibration as well as programmable linearity adjustment. Additional standard features include selectable Units button, Tare (Zero) button, Peak-hold button, load-cell overload indication, low-battery status, read-out of calibration in mV/V and programmable display resolution. The inputs provide EMI/RF-suppression. Optional features include RS232 output, pre-drilled hand-held enclosure, customer-specific enclosure foil and industrial standard sensor input socket.

Features

- Battery supply 3V (2x 1.5V AA)
- 5V stabilised bridge excitation
- Bridge resistance: 350 Ohm (or greater)
- Bridge sensitivity(max): 2.5 mV/V**
- Board Size (LxB): 116 x 68mm
- Dual Units: lb/kg – kN/tonne – 10lb/tonne
- Auto shut-off
- Optional RS232 output
- Optional Hand-Held Enclosure
- Optional Enclosure Overlays



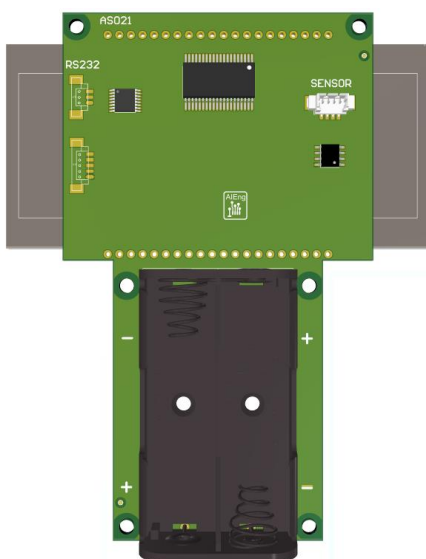
Applications

- Industrial Weighing
- Load Testing & Monitoring

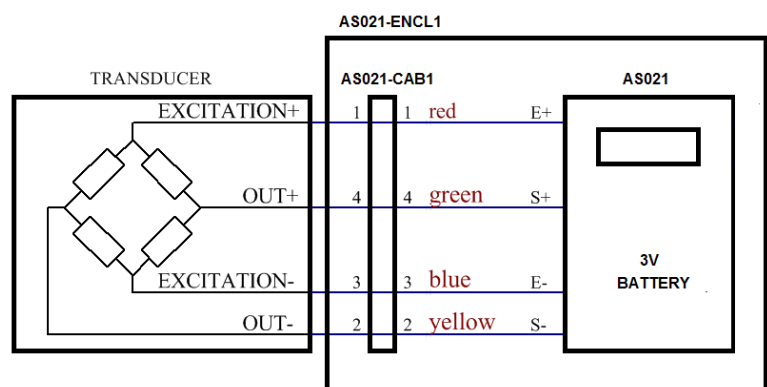
Ordering

Part number:	AS021
Default setting: 2mV/V, 1000.0kg, 9V battery	
Please refer to manual for changing default settings.	
Customer specific electrical / mechanical changes are possible	
– please contact us with your individual requirements.	

Board Connections



Schematic Diagram



Specifications

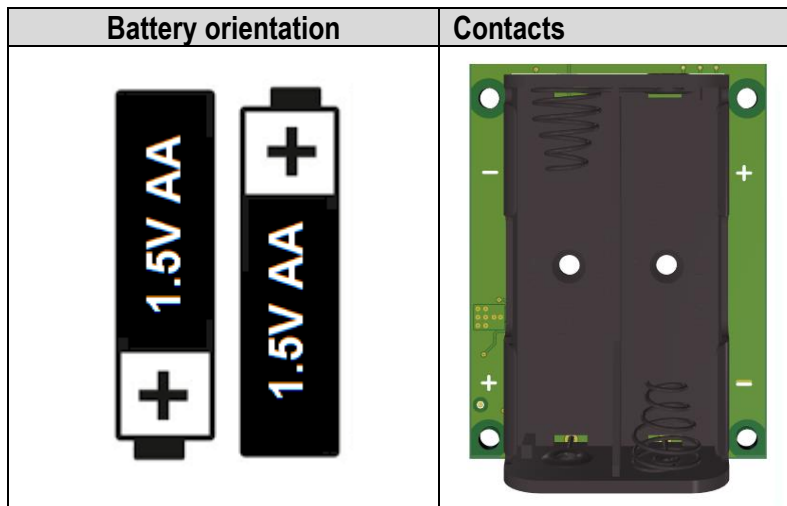
Parameter	Min	Typical	Max	Unit
Battery power supply (2x 1.5V AA)		3V		V
Bridge sensitivity	0.2		2.5**	+/-mV/V
Bridge excitation voltage		5		V
Bridge resistance	350			Ohms
Linearity		0.01		% FS
Temperature coefficient – Zero		0.2		uV/°C
Temperature coefficient – Span		30		ppm/°C
Maximum display counts		19999		
Units (Dual)	lb-kg, kN-tonne, 10lb-tonne			
Low-battery voltage status		"Lobt"		
Load-cell overload status ("HELP")		102		% FS
LCD digit height		20.5		mm
Battery auto shut-off*		20		minutes
Battery life (with 350R sensor)		TBD		hours
Operating temperature	-20		70	°C

* available with other Auto Shut-Off times or without Auto Shut-Off on request

** available for >2.5 mV/V bridge sensitivity on request

Battery Installation

The indicator is powered by 3V (2x 1.5 AA alkaline batteries).





www.aieng.co.uk

Optional Extras

Part number:	AS021-ENCL1	ABS Enclosure
--------------	-------------	---------------

with display-, push switch cut-outs, incl. 3V (2x 1.5V AA) battery holder.



Part number:	AS021-CAB1	Industrial Sensor Connector (4-pin)
--------------	------------	-------------------------------------

incl. molex plug and sensor plug (Connector - Binder Part no.: 09-3431-77-04)



Part number:	AS021-FOIL-RED/BLUE/GREEN	Standard and Customer-specific overlays
--------------	---------------------------	---

