

Portable Load Cell Indicator / Strain Gauge Indicator AS020-XB2C

The AS020-XB2C is a portable battery powered 4.5 digit LCD indicator, providing automatic Zero and Span calibration as well as programmable linearity adjustment. Additional standard features include selectable Units button, Tare (Zero) button, Peak-hold button, load-cell overload indication, low-battery status, read-out of calibration in mV/V and programmable display resolution. The inputs provide EMI-/RF-suppression. Transducer and battery wires can be easily connected by soldering or using SIL- or Molex connectors (supplied). Optional features include RS232 output, pre-drilled hand-held enclosure (IP65), protective rubber case, customer-specific enclosure foil and industrial standard sensor input socket.

Features

- Battery supply 3V (2xAA) or 9V (1xPP3)
- 5V stabilised bridge excitation
- Bridge resistance 350 Ohm (or greater)
- Bridge sensitivity (max) 2.5 mV/V**
- Board Size (LxBxH) 68 x 96 x 10mm
- Dual Units: lb/kg – kN/tonne – 10lb/tonne
- Auto shut-off
- Optional RS232 output
- Optional Hand-Held Enclosure
- Optional Enclosure Overlays



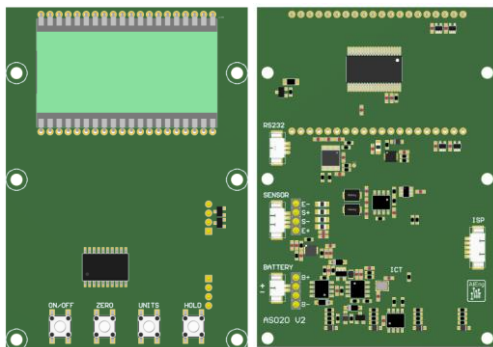
Applications

- Industrial Weighing
- Load Testing & Monitoring

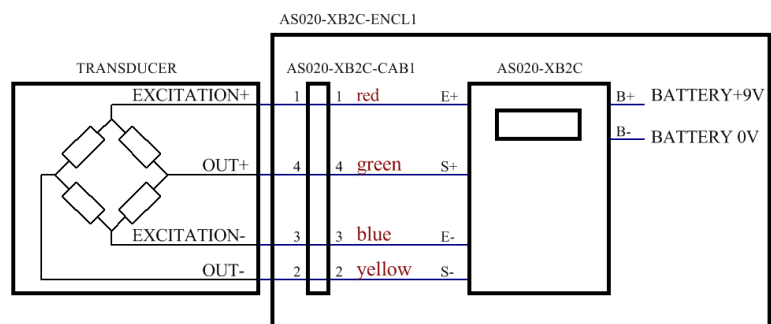
Ordering

Part number:	AS020-XB2C
*Customer specific electrical / mechanical changes are possible – please contact us with your individual requirements.	

Board Connections



Schematic Diagram



Specifications

Parameter	Min	Typical	Max	Unit
Battery power supply (2xAA or 1xPP3)	1.2	3 or 9	12	V
Bridge sensitivity	0.2		2.5**	+/-mV/V
Bridge excitation voltage		5		V
Bridge resistance	350			Ohms
Linearity		0.01		% FS
Temperature coefficient – Zero		0.2		uV/°C
Temperature coefficient – Span		30		ppm/°C
Maximum display counts		19999		
Units (Dual)	lb-kg, kN-tonne, 10lb-tonne			
Low-battery voltage status		"Lobt"		
Load-cell overload status ("HELP")		102		% FS
LCD digit height		10.16		mm
Battery auto shut-off*		20		minutes
Battery life (3V battery with 350R sensor)		TBD		hours
Battery life (9V battery with 350R sensor)		TBD		hours
Operating temperature	-20		70	°C

* available with other Auto Shut-Off times or without Auto Shut-Off on request

** available for >2.5 mV/V bridge sensitivity on request

Optional Extras

Part number: AS020-XB2C-ENCL1 | IP65 ABS Enclosure

with display-, push switch cut-outs, incl. 3V (2xAA) and 9V (1xPP3) battery contacts & LCD protection.



Part number: AS020-XB2C-CAB1 | Industrial Sensor Connector (4-pin)

incl. soldered wires and SIL plug (Connector - Binder Part no.: 09-3431-77-04)





www.aieng.co.uk

Part number: AS020-FOIL-RED/BLUE/GREEN Standard and Customer-specific overlays



Part number: AS020-CASE-YELLOW/BLUE Protective Cases available in two colours



Example: How to calibrate the AS020 using our AS600-series calibrator

